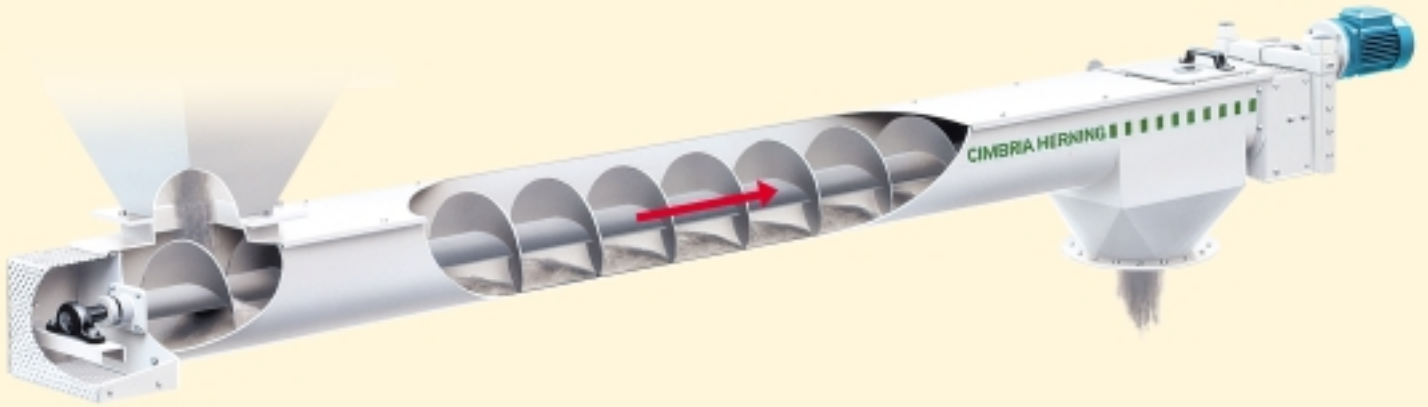


Cimbria Screw Conveyor



Screw conveyor for the industry

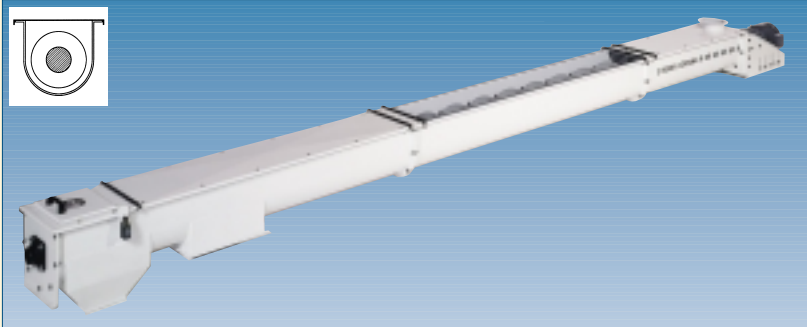
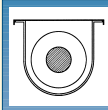


Type of screw conveyors:	SU	SO	SUH	SAU
Ash	●	●	●	○
Chalk	●	●	●	○
Dust	●	●	●	○
Earth	○	○	●	○
Fibre	●	●	●	○
Filter dust	●	●	●	○
Fish meal	●	●	●	○
Fly ash	○	○	●	○
Grain	●	●	●	○
Lime	●	●	●	○
Malt	●	●	●	○
Meal	●	●	●	○
Pills	●	●	●	○
Plaster	●	●	●	○
Plastic granulates	●	●	●	○
Quicklime	●	●	●	○
Rice	●	●	●	○
Salt	○	○	●	○
Sand	○	○	●	●
Sawdust	●	●	●	○
Screenings	○	○	○	●
Seed	●	●	●	○
Sludge	○	○	●	●
Straw	●	●	●	○
Sugar	●	●	●	○
Sunflower seed	●	●	●	○
Wood chips	○	○	●	○

● Suitable ● Partly suitable ○ Not suitable

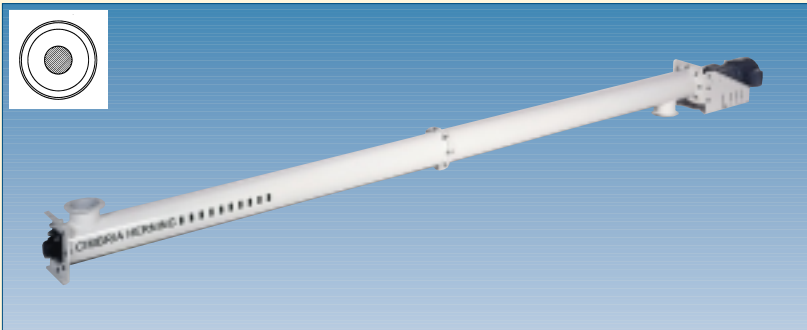
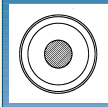


Screw conveyors



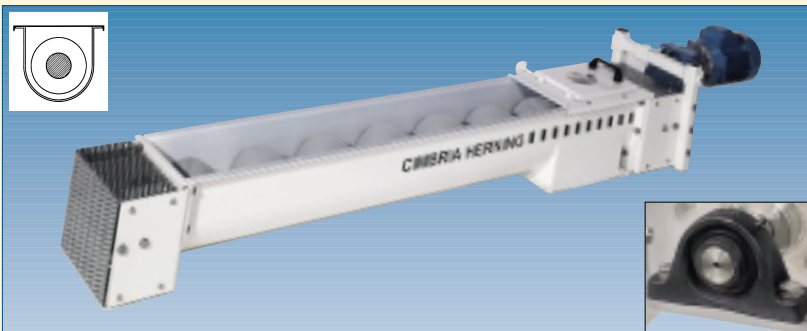
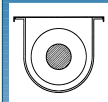
SU Trough auger

Designed for horizontal or slightly inclined transport. The screw is built up in a modular construction equipped with a dustproof cover. Max. length is 25 meters and it can be supplied in normally painted steel, stainless steel or warm electroplated steel.



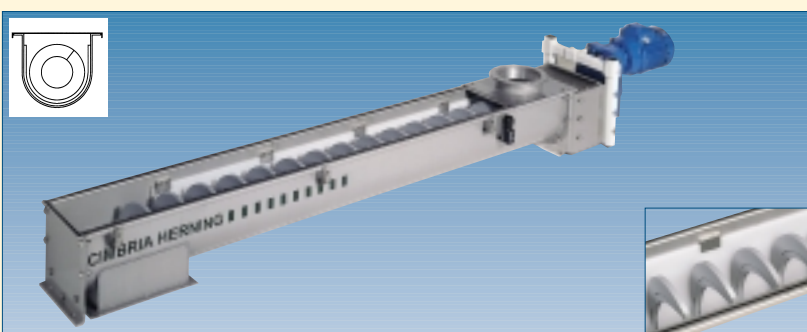
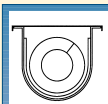
SO Tube auger

Designed for horizontal or slightly inclined transport. The screw is built up in a modular construction and can be delivered with a max. length of 25 meters. Can be supplied in either normally painted steel, stainless steel or warm electroplated steel.



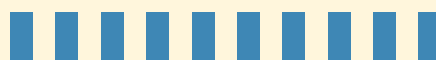
SUH Heavy duty auger

Used for conveying a wide range of bulk materials. The screw is very hardwearing because flight and trough is made in heavy-duty material. To ensure a long life, the screw is supplied with adjustable packing boxes and detached bearings. Without use of intermediate bearings the screw can obtain up to 6 meters. The screw can also be supplied with extra strong turns made in Hardox.

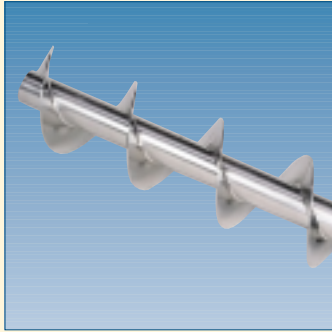


SAU Trough auger

Designed for horizontal or slightly inclined transportation of viscid products. The trough is equipped with a special lining in nylon in which the trough rests. In this way special capacities can be obtained, e.g. conveying of very viscid products. The trough is equipped with a waterproof cover. Max. length is 12 meters and it can be made of stainless steel. The inner screw is delivered in painted special steel.



D Details

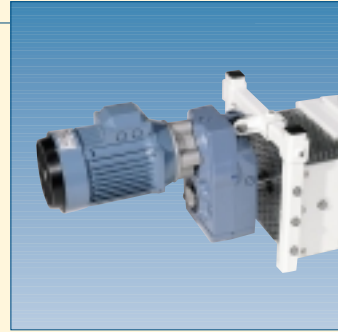


Inner screw

As a standard item the inner screws are full-welded on the transport side. On special requests i.e. concerning hygiene, the inner screw can be full-welded on both sides.

Driving unit

As standard the driving unit for screws is a quill gear which is mounted directly on the shaft. Can also be supplied as chain drive or directly drive with coupling.



Intermediate bearing

Intermediate bearings are used in order to avoid that the inner screw hangs down against the trough. The intermediate bearings can be made of different kinds of materials such as beech (wood) or bronze - depending on the product being conveyed. As an alternative ball bearings can be mounted. Fits the screw conveyor SU, SUH and SO.

Detached bearings adjustable packing boxes

Used for the conveying of products which are wearing or have a temperature over 90° C. Used together with detached bearings. Available with different packing lace and oil ring depending of the product type.

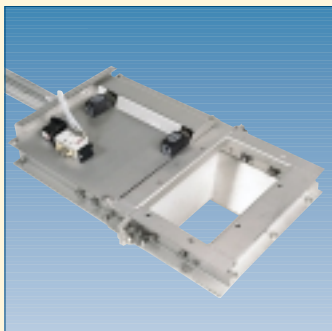


Openable bottom

In order to obtain an easy access, i.e. during the cleaning process, the screw conveyor is equipped with an openable bottom. The bottom is equipped with a spring lock and a microswitch which disconnects the screw conveyor when the bottom opens. Fits the types SU, SUH and SO.

Openable cover

Used for obtaining easy access, i.e. during the cleaning process. The cover is equipped with a spring lock and a microswitch which disconnect the screw conveyor when the cover opens. Possible to combine with the openable bottom. Fits all types.



Screw slide

Mostly used when the screw slide is mounted under the outlet of the screw. The slide plate is made of stainless steel. The screw slide is also available in a stainless design. The slide is as standard hand-operated, pneumatic or motor operated. Fits all types.

Inspection door / overflow leaf

The inspection door / overflow leaf mounted on the screw conveyor meets the general safety requirements and they both operate as an inspection instrument and as a limit switch. If the outlet of the screw is locked the leaf will open and the screw stops. This is possible because the inspection door/overflow leaf is equipped with a microswitch. Fits all types.



- more than a standard solution



The most efficient and reliable way of transporting a wide range of bulk materials in the industry is reached by using a screw conveyor.

Many years of experience has provided us with a high competence in this particular field.

And the fact that we have delivered screw conveyors to most parts of the world has given us references which prove our wide ranging experience and high quality products.

Our special knowledge and experience play a vital role when determining if the transport process in the screw conveyor runs perfectly without any interruptions.

Both when supplying a single screw conveyor but also when supplying a hole system of screw conveyors which are part of a complete plant system.

We deliver reliable single and total solutions with competent advise on the basis of your wishes and needs.



CIMBRIA ENVIROTEC GROUP A/S

Groendalsvej 19-29
7400 Herning
Denmark
Phone (+45) 97 12 38 11
Fax (+45) 97 22 41 40
<http://www.cimbria.com>
E-mail: envirotec@cimbria.com

CIMBRIA HERNING A/S

Groendalsvej 19-29
7400 Herning
Denmark
Phone (+45) 97 12 38 11
Fax (+45) 97 22 41 40
<http://www.cimbria.com>
E-mail: [herning@cimbria.com](mailto: herning@cimbria.com)