

# Data Sheet 45

## Belt Conveyors GT

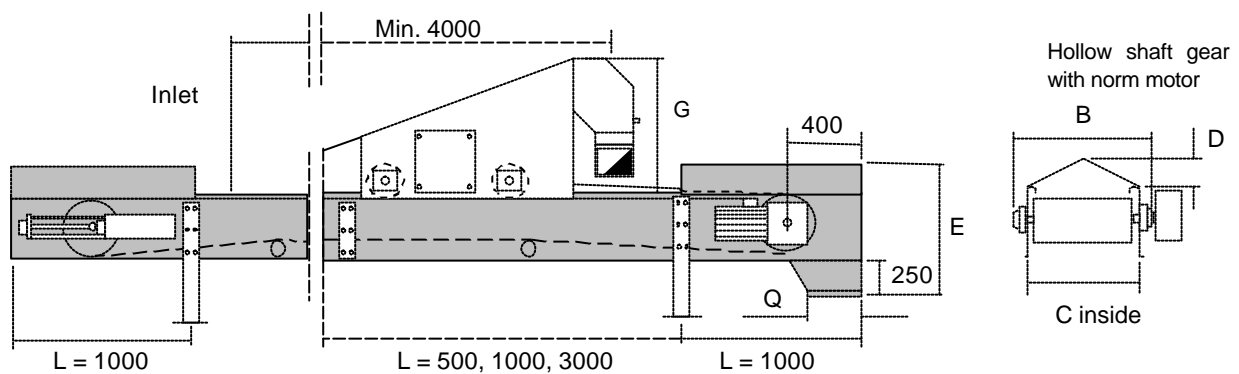


Cimbria belt conveyors type GT and GV are fitted with a rubber conveyor belt, made up of two layers and are suitable for the transportation of dry free flowing material such as grain etc. The conveyor can also be supplied with oil- and fat resistant belts if required.

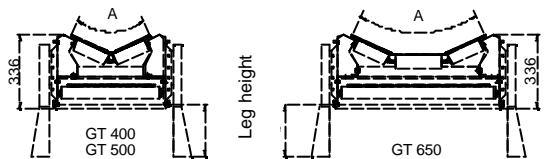
The GT belt is a trough formed unit and runs on duplex support rollers. The trough formed unit gives a high capacity compared to the belt width.

The conveyors are supplied with a discharge spout suiting Cimbria Q-flanges. The capacities stated are maximum capacities and are only applicable for dry and clean grain. Other materials will reduce the output per hour.

m <sup>3</sup> /h	100	160	260
Type	GT-400	GT-500	GT-650
Data Sheet 45			



mm/type	A	B	C inner	D	E	F	G	Outlet Q	Drive pulley	Belt rollers
GT-400	400	618	490	159	715	250	894	Q20	ø 219	ø 57
GT-500	500	718	590	182	735	250	894	Q24	ø 219	ø 57
GT-650	650	890	740	218	822	300	1040	Q30	ø 254	ø 57



For loading of the grain a feeding system is supplied. This feeding arrangement contains of an inlet hopper with sealing rails, which are positioned against the belt. The standard inlet is used when there is one and more inlets at the belt.

The belt conveyors are supplied for fixed erection with two through-going side profiles on which supporting rollers as well as drive- and tension terminals are mounted. The side profiles are also transport rails for a discharge car. The side profiles are supported by legs available in lengths up to 1800 mm (Leg height).

Type	Max. spacing of the legs without discharge car	Max. spacing of the legs with discharge car
GT-400	10 m	6 m
GT-500	10 m	6 m
GT-650	8 m	4 m

Distance between the supporting rollers of the upper part of the conveyor belt is normally approximately 1.5 meters. Return rollers of the conveyor are to be 3 meters.

The drive terminal is as standard delivered with a right mounted hollow shaft gear and supplied with scrapers in outlet spout. Standard speed of transport is 2.0 m/s.

### Optional equipment:

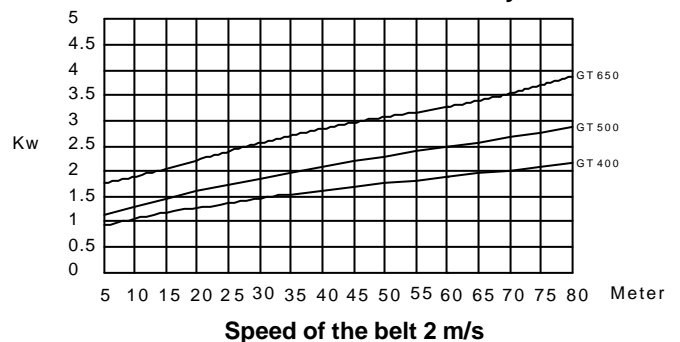
- ≠ Top and bottom cover.
- ≠ Oil resistant belt
- ≠ Belt quality for foodstuff, type FDA
- ≠ Indication set for stop of discharge car

### Discharge car (data sheet 45.1):

In case the belt conveyor is to discharge in several places, a discharge car is used. The discharge car moves on build in wheels. The discharge car can discharge along the total length of the belt conveyors, up to 4 meters from the feeding end.

The discharge car is available with either manual positioning or with motor for remote control of the discharge position. The discharge is supplied with manual - or motor operated two way valve for side outlet.

### Estimated effect for the belt conveyors



Extra power for belt with discharge car:  
GT-400 = 0.3 kW, GT-500 = 0.5 kW, GT-650 = 0.9 kW.

Copyright ? - The right to alterations is reserved.

